



ADVANCING MORE BREAKTHROUGHS  
**TOGETHER**

GRASPCANCER.ORG

# TABLE OF CONTENTS



A Letter from Our Founders	3
Meet Our Team	4
Who We Are	5
Where it All Began	6
Welcome Aboard: Meet Maggy	7
Empowering Latino Cancer Advocacy Through Training	8
Bridging Science and Patient Advocacy	10
Poster Walkthroughs	12
Poster Meetups	13
Huddles	14
GRASP Around the Globe	17
Advocacy in the Research Lab	18
Local Advocacy in Action	19
GRASP on Stage	20
A Glimpse into 2025	21
In Memoriam	22
Funders & Partners	24
Get Involved	25

***What GRASP is doing is very important. I've seen how advocates give new ideas, approaches, and understanding. This has a ripple effect in terms of how the scientists are conducting their research.***

**BARBARA SEGARRA-VAZQUEZ | DHSC**



# A LETTER FROM OUR FOUNDERS

---



Dear Friend of GRASP,

Since its inception, GRASP has been driven by the belief that breaking down barriers between cancer researchers and patient advocates accelerates more impactful progress in cancer research. In 2024, we continue to nurture this vision, expanding our collaborative framework to engage more effectively than ever.

This year, GRASP debuted at the Advancing the Science of Cancer in Latinos Conference as a key partner in launching the first-ever Latino Cancer Patient Advocate Training Program. We were proud to support this initiative, empowering Latino cancer survivors and caregivers with the knowledge and tools to become effective research advocates. The Poster Meetup we organized helped foster meaningful connections, build confidence, and strengthen a growing network of Latino advocates.

GRASP continued its global outreach by organizing a Poster Meetup at the International Invasive Lobular Breast Cancer (ILC) Symposium in Leuven, Belgium. GRASP facilitated collaborations between researchers, clinicians, and advocates to highlight the research needs and challenges unique to ILC.

GRASP co-founders, Christine Hodgdon and Julia Maués, were also invited to serve as members of the Breast International Group (BIG)-Patient Partnership Initiative (PPI). They attended a BIG patient advocate workshop in coordination with the annual European Society for Medical Oncology (ESMO) Breast Cancer Congress in Barcelona, Spain. The BIG-PPI aligns closely with GRASP's mission to integrate the patient perspective into clinical research design in a robust and meaningful way.

Reflecting on this past year, we are immensely grateful for our vibrant community - thank you! Your support, along with the dedication of our staff and volunteers, propels our mission forward. Here's to continuing our collective efforts to forge a future where collaborations between patient advocates and researchers bring new hope and solutions to the forefront of cancer care and research.

With warm regards,  
Christine Hodgdon & Julia Maués  
Co-Founders



**Christine Hodgdon**  
Co-Founder



**Julia Maués**  
Co-Founder



# MEET OUR TEAM



**Christine Hodgdon**  
Co-Founder



**Julia Maués**  
Co-Founder



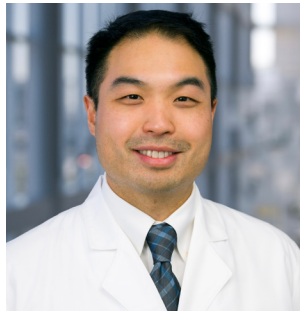
**Magdalena Mozol**  
Project Manager

## GRASP BOARD OF ADVISORS



ADVOCATE

**Beth Burnett**  
Past Chair,  
MBC Alliance



SCIENTIST

**Isaac Chan,  
M.D., Ph.D.**  
UT Southwestern



ADVOCATE

**Debbie Denardi**  
Board Member,  
305 Pink Pack



ADVOCATE

**Abigail Johnston, Esq.**  
Independent Patient  
Advocate



SCIENTIST

ADVOCATE

**Corrie Painter, Ph.D.**  
Precede Biosciences



SCIENTIST

**Hillary Andrews, Ph.D.**  
Policy Analyst, Friends  
of Cancer Research



ADVOCATE

**Jasmine Souers**  
CEO, The Missing Pink  
Breast Cancer Alliance



ADVOCATE

**Stephanie Walker**  
Independent Patient  
Advocate



# WHO WE ARE



## OUR MISSION

### **Changing the way we approach science, so we can change lives.**

Our patient-led program connects and empowers patients, clinicians, and researchers to exchange ideas and learn from each other – so we can drive more meaningful and fundable research and make faster progress to improve therapies that will end cancer.

## OUR PLEDGE

### **Committing to an #InclusionPledge to eliminate barriers in cancer care.**

GRASP pledges not to participate in any advocacy initiatives – from panels and advisory boards to planning committees and programs – that fail to include the experience of people of color.



## OUR PROGRAMS

### **Connecting advocates & cancer researchers to advance breakthroughs.**

As a diverse and growing network with a shared vision, we provide both virtual and in-person programming that seeks to break through siloes so patients, clinicians, and researchers can learn from each other.

### VIRTUAL LINKUPS

LOG ON & LEARN

**Poster Walkthroughs** – Virtual post-conference discussions about cancer research

**Huddles** – Freestanding interactive cancer research discussions

**Network** – Connections to our network of advocates & researchers

### IN-PERSON MEETUPS

EMPOWERING THROUGH EXCHANGE

**Poster Meetups** – In-person discussions about research at cancer conferences

Coming soon  
**Lab Meetups** – Patient advocate visits to cancer research labs

**Receptions** – Social gatherings between advocates & researchers



*Patients are the ultimate reason for cancer research. Working with GRASP advocates can help scientists develop better, pertinent questions to ask in their research. Patients learn about the research process and their disease, enhancing shared decision making.*

**KELLY SHANAHAN** | M.D.

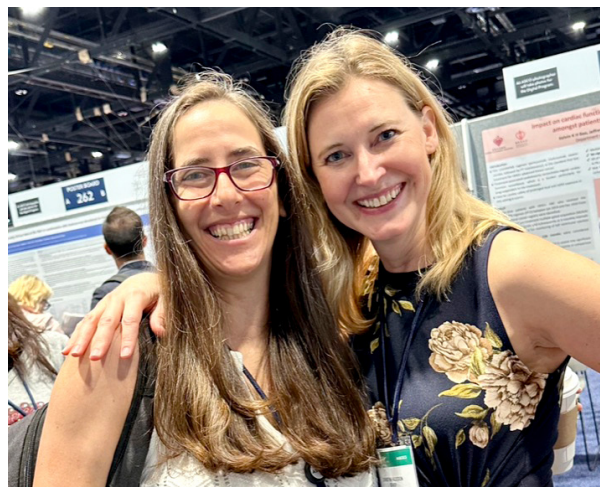


# WHERE IT ALL BEGAN

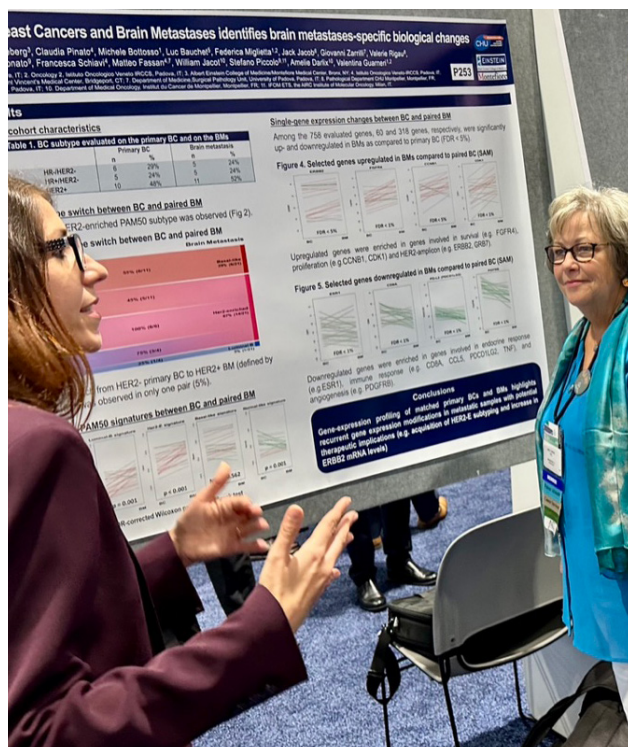


## A CHANCE ENCOUNTER, A LASTING IMPACT

In 2019, a simple poster presentation sparked an idea that would change how researchers and patients connect. At the American Society of Clinical Oncology (ASCO®) conference, Christine Hodgdon found herself in a powerful conversation with Dr. Corrie Painter. Christine shared her perspective as a patient while Dr. Painter explained the science behind the research on display. That exchange was a lightbulb moment that led to the founding of GRASP.



Today, GRASP continues to bring scientists, patient advocates, and mentors together for dynamic, small-group discussions. Whether in person or virtual, these conversations encourage advocates to ask questions and share their experiences while scientists translate complex research into accessible terms. With each interaction, GRASP fosters a deeper understanding of the science and the human experience behind cancer research.



**GRASP serves clinicians, researchers, patients, and caregivers. When we step into a GRASP session, we're all learning together. And it gives us a lot of hope.**

**JANICE COWDEN | PATIENT ADVOCATE**





# WELCOME ABOARD: MEET MAGGY



## A NEW MEMBER OF THE GRASP TEAM

This year, Maggy Mozol joined the GRASP team as the Project Manager, bringing with her a background in healthcare, project management, and community-centered work. In just a few months, she'd made a meaningful impact—bringing fresh energy, perspectives, and care to our programs and communications. Here's a short glimpse into what drew her to GRASP—and why this work matters.



*I began working in healthcare at seventeen. While I never felt called to become a doctor, I've always been drawn to meaningful work that creates a ripple effect of good in the world. I found my own path—one that allowed me to contribute in a way that felt right, using my strengths in organization and communication through project management.*

*When I came across GRASP, I was at a pivotal point in my career. After a few years of traveling and freelancing, I was craving work that felt aligned and purpose-driven. Once I started learning more about GRASP's work and how they build bridges—through real conversations between patient advocates and researchers—I knew I had to reach out.*

*In a culture where people dread Mondays or count down the hours of their workday—I don't! Working with GRASP fuels my sense of purpose. Even if my role is just one piece of a much larger mission, I feel incredibly grateful to be here. This work constantly challenges me to grow—not just professionally, but personally, too.*

MAGGY MOZOL



# EMPOWERING LATINOS IN CANCER ADVOCACY



At GRASP, we believe that every patient's voice matters in research—but too often, communities affected by cancer don't have a seat at the table. That's why we were honored to be part of the Latino Cancer Patient Advocate Training Program, launched in 2024 to equip Latino cancer survivors and caregivers with the resources they need to amplify their voices in cancer research.

This program was created by Dr. Barbara Segarra-Vázquez, a longtime patient advocate and breast cancer survivor, who first launched a similar initiative in Puerto Rico. Seeing the impact of patient training on advocacy, she expanded her vision to the United States. With support from UT Health San Antonio, Mays Cancer Center, GRASP, and others, this program became a reality—creating a space where Latino advocates could gain confidence, knowledge, and connections to make a difference.



## **A Gathering of Advocates Ready to Drive Change**

In February 2024, just before the Advancing the Science of Cancer in Latinos Conference, 15 patient advocates from different cancers met in person in San Antonio, Texas, for the first time. For many, it was a transformative experience—not just an educational program, but a chance to find community, support, and inspiration.





GRASP co-founder Julia Maués joined the training as an instructor, leading discussions on how patient advocates can work alongside researchers to shape studies, improve communication, and ensure that science reflects real patient needs. One participant captured the impact of the experience perfectly:



*For the first time, I was in a room where everyone looked like me and shared similar experiences. It was empowering to know that my voice matters in these conversations.*



### **Strengthening the Patient-Researcher Connection**

At GRASP, we've seen firsthand the power of patient-researcher collaborations, and this training was no exception. Julia worked closely with participants to help them understand how their lived experiences can drive meaningful change in cancer research. The program also covered scientific topics like genetics, drug development, and clinical trials, ensuring that advocates felt prepared to take what they learned back to their communities.

### **Building a Lasting Network of Latino Advocates**

Following the training, participants attended the Advancing the Science of Cancer in Latinos Conference, where they took part in discussions on cancer research, health disparities, and precision medicine. Many left feeling more confident, more informed, and more ready than ever to advocate for change.

The Latino Cancer Patient Advocate Training Program is more than just a workshop—it's the start of a movement. With this training, a new generation of advocates is stepping forward to champion better care, increase clinical trial participation, and ensure that research reflects the needs of Latino communities. We're proud to have been part of this initiative, and we look forward to seeing these incredible advocates continue to make an impact.



# BRIDGING SCIENCE AND PATIENT ADVOCACY



## EMPOWERING PATIENT VOICES

While not all cancer patients have professional medical experience, they are all experts at living with cancer. GRASP diligently works to provide knowledge to patients and train them to be advocates—not only for themselves, but also for others.

Through our GRASP programs, patients can engage with scientists to hear about the latest breakthroughs and research. They learn more about the biology of cancer and gain a behind-the-scenes look at how research is conducted worldwide. Patients are encouraged to ask questions and provide insights into their own experiences.



Experienced patient advocates can also become GRASP mentors—individuals who serve as liaisons between researchers and advocates to facilitate these conversations. Our advocacy development is available for patients navigating any type or stage of cancer. We know that patient voices are critical to cancer research, and we continually strive to make these connections.



***GRASP has a way of bridging the gap between advocates and researchers and forging really unique relationships. GRASP took my advocacy to another level.***

**YVONNE MCLEAN FLORENCE | PATIENT ADVOCATE**

***Being able to talk with the researchers and bounce ideas off of each other is exciting. GRASP is giving us that space and the opportunity to have those conversations.***

**KATIE EDICK | PATIENT ADVOCATE**





## ACCELERATING SCIENCE

*Dr. Isaac Chan discusses the power of patient and scientist connections*

GRASP's mission centers on the connection between patients and scientists, and it's a dynamic that's fully aligned with Dr. Isaac Chan's work. Dr. Chan is an assistant professor at UT Southwestern Medical Center in Dallas, TX, specializing in metastatic breast cancer. He's been an integral part of our Board of Advisors since 2021.

During his undergraduate studies, an advisor presented Chan with the concept of a physician-scientist. That notion of bringing the two worlds together was compelling to Chan, who was intrigued by the pursuit of science and inspired to help others through direct patient care. As for his chosen specialty, the answer became apparent: "Every time I came in contact with oncology patients and studied oncology research, it just felt like home."

In addition to serving on our Advisory Board and as a GRASP Scientist, Chan actively fosters collaboration between researchers and patients. He involves patient advocates in his lab's research, has welcomed the GRASP team to meet with his students, and encourages his trainees to participate in our advocacy programs.

"GRASP has a singular mission of trying to connect researchers with patients," says Chan. "They've provided a structured avenue for patients to have accessibility and a voice in research. That's what makes them very unique."

As Chan's team works to unravel the complexities of metastatic breast cancer, he continues to approach his work through the eyes of a physician-scientist, seeing patient experiences and perspectives as an invaluable part of the process.



Dr. Isaac Chan with GRASP Co-Founders Christine Hodgdon and Julia Maués at a white coat ceremony honoring Susan G. Komen® Career Catalyst grantees. Christine served as the patient advocate mentor for Dr. Chan's grant entitled, "Using Natural Killer Cells to Treat Metastatic Breast Cancer"

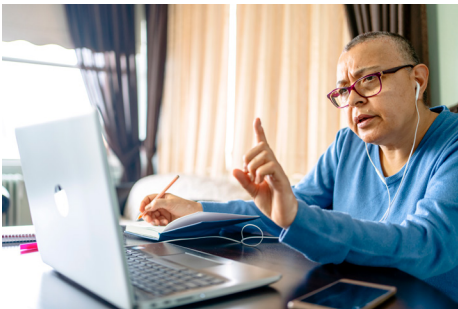
***I think that's the power of people coming together.  
That's what moves the science forward.***

# POSTER WALKTHROUGHS



## EXPLORING SCIENCE & EXCHANGING IDEAS, ONE EXPERT TO ANOTHER

*GRASP Poster Walkthroughs facilitate dynamic, virtual discussions through Zoom. Patient advocates and scientists review scientific posters directly after major cancer research conferences, fostering a deeper understanding and collaborative dialogue on groundbreaking research.*

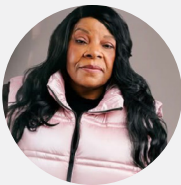


Our Poster Walkthrough programs help advocates better understand the science behind the latest cancer research presented at scientific conferences while also offering researchers the chance to hear from another group of experts—patients themselves. Each small group session matches a scientist with a mentor and five to six patient advocates to discuss and explore scientific posters being presented virtually. In 2024, GRASP held Poster Walkthroughs virtually after two major conferences.

BY THE NUMBERS	JUNE 2024 American Society of Clinical Oncology (ASCO®) Annual Meeting	DECEMBER 2024 San Antonio Breast Cancer Symposium (SABCS)
ATTENDEES TOTAL	157	270
ADVOCATES	106	202
SCIENTISTS	51	68

*Through GRASP, I've learned so much that I wouldn't have known otherwise. The walkthroughs have expanded my knowledge, and GRASP has even connected me with other opportunities. I'm able to help others and share what I've learned, which has been incredibly meaningful.*

THOMASINA BUTLER | PATIENT ADVOCATE



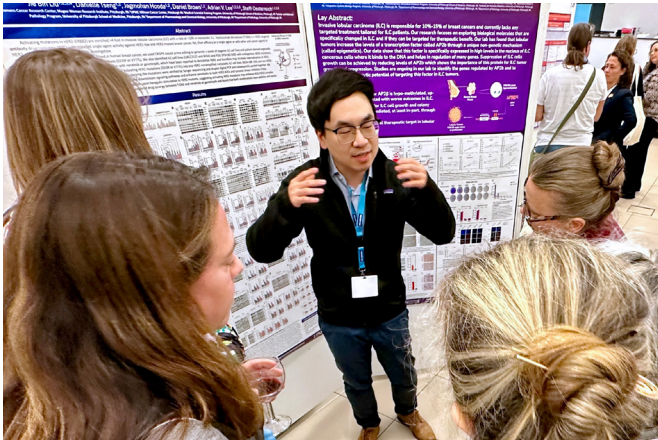


# POSTER MEETUPS



GRASP resumed in-person poster discussions in 2023, rebranded as “Poster Meetups,” at select conferences. These face-to-face walkthroughs are invaluable, providing direct interaction between advocates and researchers, enhancing personal connections, and promoting stronger collaboration.

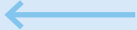
Our Poster Meetups bring together small groups of advocates, researchers, and clinicians for a detailed in-person discussion of scientific posters at cancer research conferences, guided by an expert in the field. The interactive format fosters bidirectional learning, where researchers gain insights from the patient perspective, and advocates deepen their understanding of scientific concepts. These opportunities for engagement drive innovation in cancer research by keeping patient experiences at the forefront. In 2024, GRASP held in-person Poster Meetups at two cancer research conferences.





***The unique part of GRASP is this close interaction between patient advocates and researchers at the main conferences. This connection has never been done before, and it makes a real impact, creating direct access for patient advocates to the latest research that affects them.***

**MATTEO LAMBERTINI | MD, PHD**

BY THE NUMBERS	FEBRUARY 2024 Advancing the Science of Cancer in Latinos (ASCL)	SEPTEMBER 2024 International Invasive Lobular Breast Cancer (ILC) Symposium	 We call it By the Numbers, but it's about more than stats. Each GRASP group is kept small to foster meaningful conversations and lasting connections
	ATTENDEES TOTAL	51	42
	ADVOCATES	21	31
	SCIENTISTS	30	12



## SHAPING CANCER RESEARCH THROUGH PATIENT VOICES

GRASP Huddles are in-depth discussions centered on cancer research and patient experiences. Each Huddle brings together a researcher, a mentor, and five to six patient advocates from various experience levels to explore a specific research topic. In 2024, we significantly expanded



our Huddles program to host these enriching discussions more frequently throughout the year. Designed to be bidirectional, Huddles ensure that researchers learn from advocates' lived experiences while advocates remain informed about the latest advancements in cancer research. This initiative enhances the integration of patient insights into research projects and fosters meaningful collaboration between the scientific and patient communities.

### FEBRUARY 2024

#### Traci Bethea, Ph.D.

Assistant Professor,  
Georgetown Lombardi  
Comprehensive Cancer Center



Dr. Traci Bethea spoke with high school students about cancer risks among African American women, highlighting how research careers can promote health equity and representation in science.



### MARCH - APRIL 2024

#### Luminate Medical

GRASP partnered with Luminate Medical for three Huddles, where chemotherapy patients shared insights to shape patient-centered solutions for hair loss and neuropathy during and after treatment.

### MAY 2024

#### Rachel Dittmar, Ph.D.

Research Assistant, University of Texas MD Anderson Cancer Center



Dr. Rachel Dittmar discussed the Final Gift Program at MD Anderson, which allowed metastatic breast cancer patients to contribute to cancer research through posthumous tissue donation.



**JULY 2024**

**Enrico Moiso, Ph.D.**

Senior Computational Biologist, Memorial Sloan Kettering Cancer Center

Enrico Moiso presented a study using machine learning to predict responses to CDK4/6 inhibitors in metastatic breast cancer, which aims to enhance personalized treatment plans.

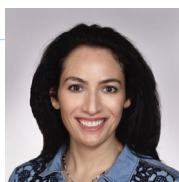


**AUGUST 2024**

**Marielle S. Gross, M.D., MBE**

CEO of de-bi, co., Faculty member at the Johns Hopkins Berman Institute of Bioethics, Practicing OBGYN physician at WellSpan Health

Dr. Marielle Gross introduced Decentralized Biobanking (de-bi), a platform that allows patients to engage with and track their biosample contributions, enhancing research collaboration and transparency.



**AUGUST 2024**

**Shoshana Rosenberg**

Associate Professor of Population Health Sciences, Weill Cornell Medicine

Dr. Shoshana Rosenberg explored the impact of plant-based diets and exercise on body composition and health outcomes in hormone receptor-positive breast cancer patients.



**AUGUST 2024**

**Elisabeth de Kermadec, M.D., MPH**

Senior Medical Director, Olema

Elisabeth de Kermadec examined the OPERA-01 phase 3 study, which assessed palazestrant's efficacy in hormone receptor-positive metastatic breast cancer after standard treatment resistance.

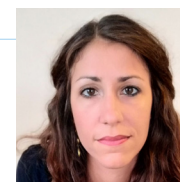


**AUGUST 2024**

**Gaia Griguolo, M.D**

Breast Cancer Oncologist at the Veneto Institute of Oncology, Junior Faculty member of the Department of Surgery, Oncology and Gastroenterology of the University of Padova

Dr. Gaia Griguolo discussed the correlation of tumor-infiltrating lymphocytes with hormone receptor-positive breast cancer outcomes, based on translational analysis of neoadjuvant trials.

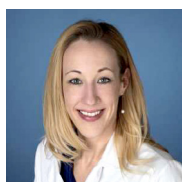


**OCTOBER 2024**

**Kelly McCann, M.D., Ph.D.**

Assistant Clinical Professor David Geffen School of Medicine  
UCLA Hematology and Oncology

Dr. Kelly E. McCann reviewed a phase 2 study on BB-1701, targeting HER2 in metastatic breast cancer, discussing its safety and potential effectiveness for heavily treated patients.





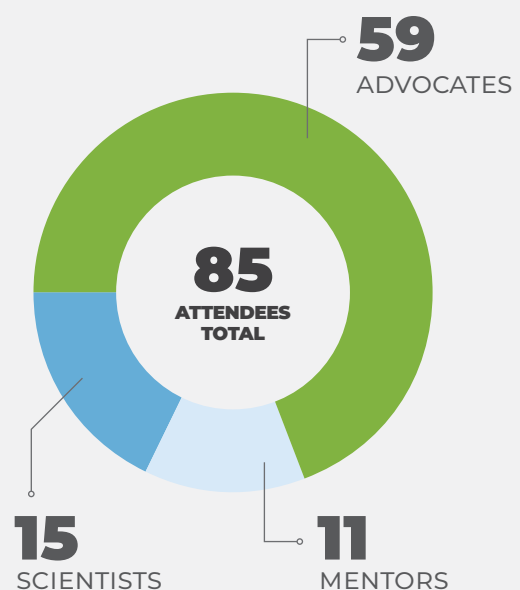
***Being able to present our technology to cancer patients and providing a glimmer of hope was gratifying. It re-informed for us why we are engaged in what we are doing and why we should not give up despite the numerous adversities we face as a startup.***

**VISH V. SUBRAMANIAM**

ACADEMY PROFESSOR AND PROFESSOR EMERITUS, OHIO STATE UNIVERSITY (OSU)

## **BUILDING STRONG FOUNDATIONS FOR PATIENT-INCLUSIVE RESEARCH**

GRASP expanded its Huddles program in 2024 to include more Huddles throughout the year, laying the groundwork for ongoing collaborations that can support future cancer research projects and grant funding applications.



# GRASP AROUND THE GLOBE



**MAY 2024**

**Barcelona, Spain**

**BIG-PPI Workshop at the European Society for Medical Oncology (ESMO)  
Breast Cancer Congress**

GRASP co-founders, Christine Hodgdon and Julia Maués, were honored to be invited as members of the Breast International Group's Patient Partnership Initiative (BIG-PPI). BIG conducts breast cancer trials and research programs in Europe, Canada, Latin America, Asia, and Australasia, and the PPI ensures patient advocates help guide research priorities as trusted advisors.

As part of their role, Christine and Julia attended a BIG-PPI workshop held alongside the European Society for Medical Oncology (ESMO) Breast Cancer Congress in Barcelona, Spain. This was their first time attending ESMO and a meaningful step toward building research advocacy capacity and strengthening patient-researcher collaborations in the European cancer research community.





# ADVOCACY IN THE RESEARCH LAB



## AUGUST 2024

### Aurora, CO

Ahead of the 2024 SNO/ASCO CNS Metastases Conference hosted by the Society for Neuro-Oncology (SNO) and the American Society of Clinical Oncology (ASCO), GRASP Co-Founder Christine Hodgdon and patient advocate Lianne Kraemer visited the lab of longtime GRASP collaborator Dr. Diana Cittelly, Ph.D. at the University of Colorado Anschutz Medical Campus. Dr. Cittelly's research explores the biology of brain metastases, particularly in hormone receptor-positive breast cancer. The visit sparked a rich, bidirectional exchange—Lianne and Christine shared their lived experience while learning about the lab's latest findings.

## NOVEMBER 2024

### Bethesda, MD

#### NCI Laboratory of Cancer Biology and Genetics

GRASP co-founder Julia Maués spoke about the importance of including advocates in cancer research at the National Cancer Institute's (NCI) Laboratory of Cancer Biology and Genetics in November 2024. Julia, alongside National Breast Cancer Coalition (NBCC) advocates Deborah Charles-Chisholm and Marylinn Minor, shared insights on meaningful patient engagement in research. The advocates toured the lab of Dr. Senthil Muthuswamy and others within the Laboratory of Cancer Biology and Genetics, deepening the advocates' understanding of cancer research and the scientists' appreciation of the patient experience.



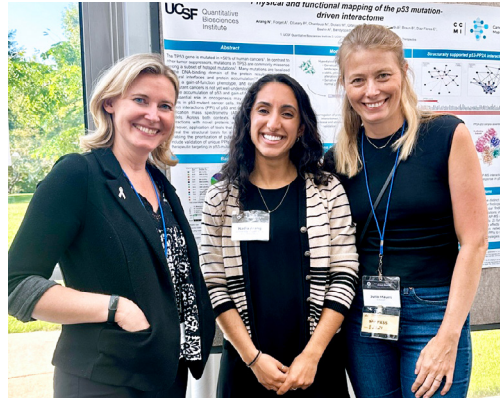
# LOCAL ADVOCACY IN ACTION



**AUGUST 2024**

## **Bethesda, MD NCI JI Meeting**

GRASP co-founders Christine Hodgdon and Julia Maues actively participated in the NCI Junior Investigator (JI) Meeting, held at the NIH Campus in Bethesda, MD. This annual gathering connected late-stage graduate students, postdocs, and early career faculty from diverse fields such as systems biology, big data science, and engineering, who build and apply novel tools to better understand cancer. Christine and Julia spoke on an advocate panel and served as judges for a poster session, enhancing the dialogue between emerging scientists and seasoned patient advocates. Their involvement underscored GRASP's dedication to integrating patient advocacy into cancer research, fostering essential discussions that bridge academic findings with real-world patient experiences.



→  
GRASP recruited local patient advocates to join a Junior Investigator meeting at the NCI, providing real-world experience in communicating with early-career scientists







## DECEMBER 2024

### San Antonio, TX San Antonio Breast Cancer Symposium (SABCS)

GRASP co-founder Julia Maues, alongside fellow scientific presenters, addressed oncologists at SABCS during a clinical workshop on the critical need for dose optimization in breast cancer treatment. Dose optimization challenges the traditional 'more is better' approach, advocating for dosages that minimize side effects while maintaining effectiveness. This effort, spearheaded by the Patient-Centered Dosing Initiative, founded by the late advocate Anne Loeser with early involvement from GRASP co-founders, has influenced broader reform efforts, including the FDA's Project Optimus. This initiative aims to enhance patient quality of life by adjusting drug doses to optimize treatment tolerability and effectiveness, ultimately allowing patients to maintain treatment with fewer disruptions.



## DECEMBER 2024

### San Antonio, TX San Antonio Breast Cancer Symposium (SABCS)

GRASP co-founder Christine Hodgdon brought the patient voice to SABCS's Educational Session focused on the biology and treatment implications of organ-specific metastases. In a role not typically filled by patient advocates, Christine served as a discussant, translating each scientific

presentation on brain, liver, and bone metastases into accessible, patient-friendly language. Her unique contribution helped bridge the gap between researchers and the patient community, ensuring the science was understandable and inclusive. Christine also spoke about the importance of partnership between scientists and advocates, encouraging greater collaboration and reminding attendees that many advocates are ready and willing to contribute their lived experience and insights to help move the field forward.



# A GLIMPSE INTO 2025



## RAISING AWARENESS OF THE POWER OF PATIENT-INCLUSIVE RESEARCH

As we progress through 2025, we will continue to see more organizations recognize the value of patient-inclusive research, and GRASP is expanding its network to support these efforts. We aim to continue to be actively involved in key conferences and meetings, fostering meaningful bi-directional conversations between researchers and patient advocates while expanding the types of programs and sessions we offer.

Here is a preview of some of the significant and new events that are in the works for 2025:

## LOOK FOR GRASP AT THESE UPCOMING MEETINGS

### FEBRUARY 2025 – SINGAPORE

Asia-Pacific Breast Cancer Summit

Invited Speaker

### APRIL 2025 – MADRID, SPAIN

CRIS Cancer Foundation Annual Scientific Symposium

Invited Speaker

### MAY 2025 – MUNICH, GERMANY

European Society for Medical Oncology (ESMO) Breast Cancer

Industry-sponsored Panelist

### JUNE 2025 – CHICAGO, IL

American Society of Clinical Oncology (ASCO®) Annual Meeting

Poster Walkthrough

### AUGUST 2025 – PITTSBURGH, PA

Great Lakes Breast Cancer Symposium (GLBCS)

Poster Meetup

### NOVEMBER 2025 – LISBON, PORTUGAL

Advanced Breast Cancer Seventh (ABC7) International  
Consensus Conference

Invited Speaker

### DECEMBER 2025 – SAN ANTONIO, TX

San Antonio Breast Cancer Symposium (SABCS)

Poster Walkthrough & Reception



## EXCITING NEWS!

GRASP is collaborating with the FDA to launch a first-of-its-kind workshop to educate patient advocates in drug development and clinical trial design. Applications open in 2025, and the workshop will be held in 2026!

# IN MEMORIAM

---



## MARLENA MURPHY

In 2024, with great sorrow, we lost a beloved friend and member of the GRASP team, Marlena Murphy, who passed away on July 4, 2024.

We mourn the loss of this remarkable soul who touched countless lives with her unwavering dedication and infectious smile. Marlena's journey with GRASP began at the very inception of our organization—she was the recipient of a GRASP scholarship that allowed her to attend the San Antonio Breast Cancer Symposium and participate in our very first Poster Walkthrough as a patient advocate. Marlena quickly became a GRASP Mentor and later officially joined our team as a Program Manager. She poured her heart into every role she undertook, embodying the values of kindness, resilience, and unwavering determination.

Marlena was more than a colleague; she was family. Her absence is deeply felt, and her memory will be cherished as we continue the work she so passionately believed in.



## HONORING THE LEGACY & CONTRIBUTIONS OF ESTEEMED COLLABORATORS

The emblems below were awarded to posters of distinction at conferences where GRASP held Poster Walkthroughs and Meetups in 2024. As we continue to make strides together in advancing cancer research, we pause to honor the advocates and colleagues who, sadly, are no longer with us. Their invaluable contributions to the patient-inclusive research movement will never be forgotten, and we remain committed to carrying forward their legacies as we work toward a future free of cancer.

### Advancing the Science of Cancer in Latinos 2024



Maripili Garcia

---

### American Society of Clinical Oncology (ASCO®) 2024



Clare Hanusz



Jersi Baker



Jill Cohen



Kerri Conner  
Matchett



Natalia Green



Ryan Keith

---

### International Invasive Lobular Breast Cancer (ILC) Symposium 2024



Emanuela Busz

---

### San Antonio Breast Cancer Symposium (SABCS) 2024



Carol Smith



Gwen Manchion



Kelli Davis



Marlena  
Murphy



Sheila Johnson



Terri Shipp



# FUNDERS & PARTNERS



## YOUR DEDICATION & GENEROSITY FUELS OUR MOVEMENT

GRASP programs and growth are made possible through the ongoing support of our funders and partners, who share our belief in the importance of patient-inclusive research in driving faster progress toward cancer cures.

## WITH THANKS TO OUR FUNDERS



TERESA SHIPP

Genentech



## WITH THANKS TO OUR PARTNERS

- ABC Global Alliance
- American Society of Clinical Oncology (ASCO®)
- BIG Against Breast Cancer
- BreastCancer.org
- BreastCancerTrials.org
- Chan Lab
- Chrysalis Initiative
- COR2ED
- Hope For OTHERS Tissue Donation Program
- International Invasive Lobular Breast Cancer (ILC) Symposium
- John Hopkins Medicine
- Lee/Oesterreich Laboratory
- Light Collective
- Living Beyond Breast Cancer
- Lobular Breast Cancer Alliance
- Mac4Me
- MBCBrainMets.org
- Metastatic Breast Cancer Alliance
- Metastatic Breast Cancer Trial Search
- Missing Pink Breast Cancer Alliance
- Our MBC Life
- Patient-Centered Dosing Initiative
- PeerView
- Project Life
- Rising Tide® Foundation for Clinical Cancer Research
- San Antonio Breast Cancer Symposium (SABCS)
- Theresa's Research Foundation

# GET INVOLVED



## JOIN THE MOVEMENT TO ADVANCE MORE BREAKTHROUGHS

Not a GRASP member yet? Join us in the effort to break silos between the different groups involved in cancer research. By becoming part of our network, you'll gain access to upcoming events and opportunities to connect with researchers, advocates, and partner organizations in your areas of interest.

[Join Us](#)



Scan to join our network!

## SUPPORT GRASP'S MISSION

We rely on the generosity of our community and partners to continue providing valuable programs, fostering meaningful discussions, and supporting patient-centric research. Your donation helps us expand our reach and make a bigger impact. Every contribution counts in our shared mission to accelerate cancer breakthroughs.

[Donate here](#)



Scan to donate!



### GRASP

711 W 40th Street, Ste 153-125  
Baltimore, MD 21211  
[grasp@graspcancer.org](mailto:grasp@graspcancer.org)

GRASP is a program of Trailhead Institute, a 501(c)(3) nonprofit organization.